

Millfields Mag

FRIDAY 13TH JUNE 2025

VIERNES 13 DE MAYO DE 2025

www.millfields.hackney.sch.uk

E-mail: info@millfields.hackney.sch.uk



Millfields
Community School
Hilsea Street
Hackney
E5 0SH
TEL : 020 8985 7898

The Sun is Shining at Millfields



We have had another very busy week at Millfields this week! It is 'Bike Week' and the children and adults have certainly all been cycling to the point that there was very little room left in the bike shed! Thank you for encouraging your children to cycle and scoot. Thank you also to the 50 plus children and adults who took part in the 'Big Ride Out' on Wednesday morning before school started. This



takes place every Wednesday -meet at the school at 8.20am or join along the route. All are welcome!

First thing this morning, we enjoyed 3 lovely assemblies from Nile Class, Mersey Class and Karisimbi Class - the children take such pride in sharing their learning, they all look great in their costumes, and they all learnt lots of lines of songs, poems and scripts to entertain parents and families. Thank you for coming along, and thank you to the children and staff!

Today it was our termly Outdoor Day (morning!) and we took full advantage of the beautiful weather. We all walked down to Hackney Marshes, and played lots of team games with sports equipment, parachutes, and biscuits, did scavenger hunts, bug hunts, created nature art, as well as climbed trees, ran around and sat in the shade for a drink and snack! The children and staff loved it!

Yesterday, Y4, Y5 and Y6 children had a great afternoon in the company of TokTok sensation and science author 'Big Manny'. Emmanuel (his given name) spoke to the children about his journey through primary and secondary school, and university where he got both a bachelor and master degree; then about his first job as a science lab technician and about how he decided to get into making online science experiment videos during lockdown, and shared his current success with his science books! Big Manny shared a few experiments that the children loved, and of course he did set off the fire alarm too! If you want to see more, look at the video here:

<https://www.youtube.com/watch?v=pVYMXCTGCq8>. Thanks to Sheyenne for organising!

Also this week, Y4 classes visited Bruce Castle Museum to take part in Windrush workshops to enhance their topic work, and Y1 visited Monument as part of their classwork on the Great Fire of London.

We have also been very busy on the sporting front this week. yesterday, some new and more experienced cyclists in Y4, Y5 and Y6 took part in the penultimate Hackney Cycling League event at Hackney Downs. They did so well, and really enjoyed the experience. We are still just about top of the league and need lots of points in the last race in July to retain the trophy! Thanks to Nishie and to Beatrice's mum, Mary for helping out. On Wednesday, a talented group of Y5 and Y6 children -took part in the cross Hackney Kwik-Cricket tournament, and I am delighted to say we won, and received a cup and medals that will be presented next week! Thanks to Izaac for organising and taking them.

Finally, have a lovely weekend, and let's hope the good weather continues.

Take care and stay well. Best Wishes, Jane

Important Dates

Inset Day

Friday 20th June

Democracy Week

30th June - 4th July

Summer Fair

Saturday 12th July

Sports Fortnight

7th - 18th July

London Day

Thursday 17th July

Last Day of Term

Friday 18th July

Word of the Week

KYOODLE

First recorded in 1880-85.

Imitates the sound of a yelping dog or canid; perhaps influenced or related to the word coyote, from the Nahuatl word *coyōtl*.

verb

to bark or yelp noisily or foolishly

E.g.: The dachshund began to kyoodle the moment the postman turned the corner.

Tuck Shop

The next Tuck shop will be on

Friday 27th June



run by Mekong Class!

FRIDAY THE 13TH!



SHARING ASSEMBLIES

Summer Term 2025

| Date | Bottom Hall @ 9:10am | Middle Hall @ 9:10am | Top Hall @ 9:10am |
|------------------------------|--------------------------------|--------------------------------|----------------------------------|
| Friday 27/06/2025 | Shannon Class (RS - Rachel) | Trent Class (RC - Cheniece) | Kilimanjaro Class (1C - Dean) |

Happy Birthday to the children and staff who celebrated their birthdays this week:

7th June ~ Blessing M, Cassius T & Hamish W
8th June ~ Aadam C & Thomas M
9th June ~ Mahad A & Luan M
10th June ~ Elyse N, Filippo P & Fiona S
11th June ~ Remi K, Inayah M & Audrey W
13th June ~ Anna K & Riley P

Many Happy Returns to you ALL!

PSA After-school

Tuck Shops — Summer 2025

We always need people to volunteer time to run the stall on the day and will need lots of donations of food on the day. Just take your food to the office on the day of your stall. Please remember that all food must be nut free to comply with school policy.

| Date | Class |
|------------------|------------------|
| Friday 20th June | <i>Inset Day</i> |
| Friday 27th June | Mekong (Yr4) |
| Friday 4th July | Trent (Yr1) |
| END OF | TERM |

FREE OF CHARGE

FOOTBALL MILLFIELDS PARK

The Access to Sports Project are offering Football Activities for young people aged 8 - 16

- Saturdays
- 12pm - 2pm

North Millfields Park Casimir Road E5 9NX

REGISTER NOW



0207 686 8812

www.accesstosports.org.uk



Supported by



SUMMER HOLIDAY CAMP

Art & Circus Holiday Camp Theme: Circus

for children aged 5 - 11 years old

July 28th - 1st

August 4th - 8th

August 11th - 15th

August 18th - 22nd

August 25th - 29th

Age Range: 5 - 11 years old

Times: 9am - 3.30pm

(early drop off @ 8.30am & late pick up @ 5pm)

10% New Referral Discount

10% Sibling Discount

Columbia Primary School

49-53 Columbia Rd,
E2 7RH

&

Holy Trinity Primary School,
Beechwood Road,
E83DY

www.theartimaginarium.co.uk

hello@theartimaginarium.co.uk



SPORTS DAYS at MILLFIELDS

Monday 7th July -UKS2 (Y5 & Y6)

Tuesday 8th July -KS1 (Y1 and Y2)

**Wednesday 9th July -EYFS
(Nursery & Reception)**

Thursday 10th July -LKS2 (Y3 and Y4)





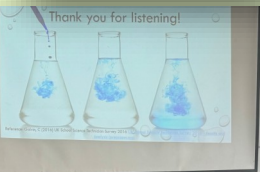
MILLFIELDS SUMMER FAIR

**11-3PM SATURDAY
JULY 12TH 2025**

*Delicious Food & Drink ★ Marvellous Market Stalls
Krazy Karaoke ★ Dreamy Wellbeing Treatments
Fabulous Fun & Games + Much Much More!*



Millfields Life in Pictures



TERM DATES CURRENT YEAR

Millfields Community School Term Dates 2024-25

| September 2024 | | | | | | | October 2024 | | | | | | | November 2024 | | | | | | | December 2024 | | | | | | | Key |
|----------------|----|----|----|----|----|----|---------------|----|----|----|----|----|----|---------------|----|----|----|----|----|----|---------------|----|----|----|----|----|----|-----------------|
| M | T | W | T | F | S | S | M | T | W | T | F | S | S | M | T | W | T | F | S | S | M | T | W | T | F | S | S | |
| | | | | | 1 | | 1 | 2 | 3 | 4 | 5 | 6 | | | | | 1 | 2 | 3 | | | | | | | 1 | | School Days |
| 2 | 3 | 4 | 5 | 6 | 7 | 8 | 7 | 8 | 9 | 10 | 11 | 12 | 13 | 4 | 5 | 6 | 7 | 8 | 9 | 10 | 2 | 3 | 4 | 5 | 6 | 7 | 8 | Weekends |
| 9 | 10 | 11 | 12 | 13 | 14 | 15 | 14 | 15 | 16 | 17 | 18 | 19 | 20 | 11 | 12 | 13 | 14 | 15 | 16 | 17 | 9 | 10 | 11 | 12 | 13 | 14 | 15 | School Holidays |
| 16 | 17 | 18 | 19 | 20 | 21 | 22 | 21 | 22 | 23 | 24 | 25 | 26 | 27 | 18 | 19 | 20 | 21 | 22 | 23 | 24 | 16 | 17 | 18 | 19 | 20 | 21 | 22 | Bank Holidays |
| 23 | 24 | 25 | 26 | 27 | 28 | 29 | 28 | 29 | 30 | 31 | | | | 25 | 26 | 27 | 29 | 29 | 30 | | 23 | 24 | 25 | 26 | 27 | 28 | 29 | Inset Days |
| 30 | | | | | | | | | | | | | | | | | | | | | 30 | 31 | | | | | | |
| January 2025 | | | | | | | February 2025 | | | | | | | March 2025 | | | | | | | April 2025 | | | | | | | |
| M | T | W | T | F | S | S | M | T | W | T | F | S | S | M | T | W | T | F | S | S | M | T | W | T | F | S | S | |
| | | 1 | 2 | 3 | 4 | 5 | | | | | | 1 | 2 | | | | | | 1 | 2 | | 1 | 2 | 3 | 4 | 5 | 6 | |
| 6 | 7 | 8 | 9 | 10 | 11 | 12 | 3 | 4 | 5 | 6 | 7 | 8 | 9 | 3 | 4 | 5 | 6 | 7 | 8 | 9 | 7 | 8 | 9 | 10 | 11 | 12 | 13 | |
| 13 | 14 | 15 | 16 | 17 | 18 | 19 | 10 | 11 | 12 | 13 | 14 | 15 | 16 | 10 | 11 | 12 | 13 | 14 | 15 | 16 | 14 | 15 | 16 | 17 | 18 | 19 | 20 | |
| 20 | 21 | 22 | 23 | 24 | 25 | 26 | 17 | 18 | 19 | 20 | 21 | 22 | 23 | 17 | 18 | 19 | 20 | 21 | 22 | 23 | 21 | 22 | 23 | 24 | 25 | 26 | 27 | |
| 27 | 28 | 29 | 30 | 31 | | | 24 | 25 | 26 | 27 | 28 | | | 24 | 25 | 26 | 27 | 28 | 29 | 30 | 28 | 29 | 30 | | | | | |
| | | | | | | | | | | | | | | 31 | | | | | | | | | | | | | | |
| May 2025 | | | | | | | June 2025 | | | | | | | July 2025 | | | | | | | August 2025 | | | | | | | |
| M | T | W | T | F | S | S | M | T | W | T | F | S | S | M | T | W | T | F | S | S | M | T | W | T | F | S | S | |
| | | | 1 | 2 | 3 | 4 | | | | | | 1 | | 1 | 2 | 3 | 4 | 5 | 6 | | | | | 1 | 2 | 3 | | |
| 5 | 6 | 7 | 8 | 9 | 10 | 11 | 2 | 3 | 4 | 5 | 6 | 7 | 8 | 7 | 8 | 9 | 10 | 11 | 12 | 13 | 4 | 5 | 6 | 7 | 8 | 9 | 10 | |
| 12 | 13 | 14 | 15 | 16 | 17 | 18 | 9 | 10 | 11 | 12 | 13 | 14 | 15 | 14 | 15 | 16 | 17 | 18 | 19 | 20 | 11 | 12 | 13 | 14 | 15 | 16 | 17 | |
| 19 | 20 | 21 | 22 | 23 | 24 | 25 | 16 | 17 | 18 | 19 | 20 | 21 | 22 | 21 | 22 | 23 | 24 | 25 | 26 | 27 | 18 | 19 | 20 | 21 | 22 | 23 | 24 | |
| 26 | 27 | 28 | 29 | 30 | 31 | | 23 | 24 | 25 | 26 | 27 | 28 | 29 | 28 | 29 | 30 | 31 | | | | 25 | 26 | 27 | 28 | 29 | 30 | 31 | |
| | | | | | | | 30 | | | | | | | | | | | | | | | | | | | | | |

NEXT YEAR

Millfields Community School Term Dates 2025-26

| September 2025 | | | | | | | October 2025 | | | | | | | November 2025 | | | | | | | December 2025 | | | | | | | Key |
|----------------|----|----|----|----|----|----|---------------|----|----|----|----|----|----|---------------|----|----|----|----|----|----|---------------|----|----|----|----|----|----|-----------------------------------|
| M | T | W | T | F | S | S | M | T | W | T | F | S | S | M | T | W | T | F | S | S | M | T | W | T | F | S | S | |
| 1 | 2 | 3 | 4 | 5 | 6 | 7 | | | 1 | 2 | 3 | 4 | 5 | | | | | | 1 | 2 | 1 | 2 | 3 | 4 | 5 | 6 | 7 | School Days |
| 8 | 9 | 10 | 11 | 12 | 13 | 14 | 6 | 7 | 8 | 9 | 10 | 11 | 12 | 3 | 4 | 5 | 6 | 7 | 8 | 9 | 8 | 9 | 10 | 11 | 12 | 13 | 14 | Weekends |
| 15 | 16 | 17 | 18 | 19 | 20 | 21 | 13 | 14 | 15 | 16 | 17 | 18 | 19 | 10 | 11 | 12 | 13 | 14 | 15 | 16 | 15 | 16 | 17 | 18 | 19 | 20 | 21 | School Holiday |
| 22 | 23 | 24 | 25 | 26 | 27 | 28 | 20 | 21 | 22 | 23 | 24 | 25 | 26 | 17 | 18 | 19 | 20 | 21 | 22 | 23 | 22 | 26 | 24 | 25 | 26 | 27 | 28 | Bank Holidays |
| 29 | 30 | | | | | | 27 | 28 | 29 | 30 | 31 | | | 24 | 25 | 26 | 27 | 28 | 29 | 30 | 29 | 30 | 31 | | | | | Inset Days |
| January 2026 | | | | | | | February 2026 | | | | | | | March 2026 | | | | | | | April 2026 | | | | | | | 2 inset days still to allocate |
| M | T | W | T | F | S | S | M | T | W | T | F | S | S | M | T | W | T | F | S | S | M | T | W | T | F | S | S | |
| | | | 1 | 2 | 3 | 4 | | | | | | | 1 | | | | | | | 1 | | | 1 | 2 | 3 | 4 | 5 | |
| 5 | 6 | 7 | 8 | 9 | 10 | 11 | 2 | 3 | 4 | 5 | 6 | 7 | 8 | 2 | 3 | 4 | 5 | 6 | 7 | 8 | 6 | 7 | 8 | 9 | 10 | 11 | 12 | |
| 12 | 13 | 14 | 15 | 16 | 17 | 18 | 9 | 10 | 11 | 12 | 13 | 14 | 15 | 9 | 10 | 11 | 12 | 13 | 14 | 15 | 13 | 14 | 15 | 16 | 17 | 18 | 19 | |
| 19 | 20 | 21 | 22 | 23 | 24 | 25 | 16 | 17 | 18 | 19 | 20 | 21 | 22 | 16 | 17 | 18 | 19 | 20 | 21 | 22 | 20 | 21 | 22 | 23 | 24 | 25 | 26 | |
| 26 | 27 | 28 | 29 | 30 | 31 | | 23 | 24 | 25 | 26 | 27 | 28 | | 23 | 24 | 25 | 26 | 27 | 28 | 29 | 27 | 28 | 29 | 30 | | | | |
| | | | | | | | | | | | | | | 30 | 31 | | | | | | | | | | | | | |
| May 2026 | | | | | | | June 2026 | | | | | | | July 2026 | | | | | | | August 2026 | | | | | | | |
| M | T | W | T | F | S | S | M | T | W | T | F | S | S | M | T | W | T | F | S | S | M | T | W | T | F | S | S | |
| | | | | 1 | 2 | 3 | 1 | 2 | 3 | 4 | 5 | 6 | 7 | | | 1 | 2 | 3 | 4 | 5 | | | | | | 1 | 2 | |
| 4 | 5 | 6 | 7 | 8 | 9 | 10 | 8 | 9 | 10 | 11 | 12 | 13 | 14 | 6 | 7 | 8 | 9 | 10 | 11 | 12 | 3 | 4 | 5 | 6 | 7 | 8 | 9 | |
| 11 | 12 | 13 | 14 | 15 | 16 | 17 | 15 | 16 | 17 | 18 | 19 | 20 | 21 | 13 | 14 | 15 | 16 | 17 | 18 | 19 | 10 | 11 | 12 | 13 | 14 | 15 | 16 | |
| 18 | 19 | 20 | 21 | 22 | 23 | 24 | 22 | 23 | 24 | 25 | 26 | 27 | 28 | 20 | 21 | 22 | 23 | 24 | 25 | 26 | 17 | 18 | 19 | 20 | 21 | 22 | 23 | |
| 25 | 26 | 27 | 28 | 29 | 30 | 31 | 29 | 30 | | | | | | 27 | 28 | 29 | 30 | 31 | | | 24 | 25 | 26 | 27 | 28 | 29 | 30 | |
| | | | | | | | | | | | | | | | | | | | | | 31 | | | | | | | |



Millfields VIPs



KS1



UKS2

